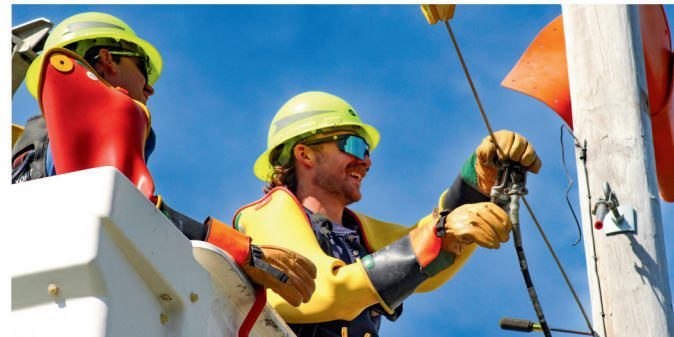
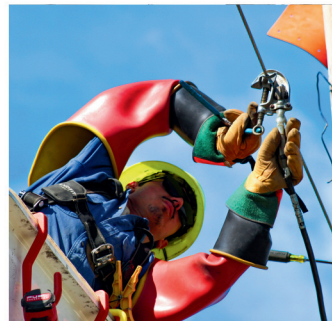




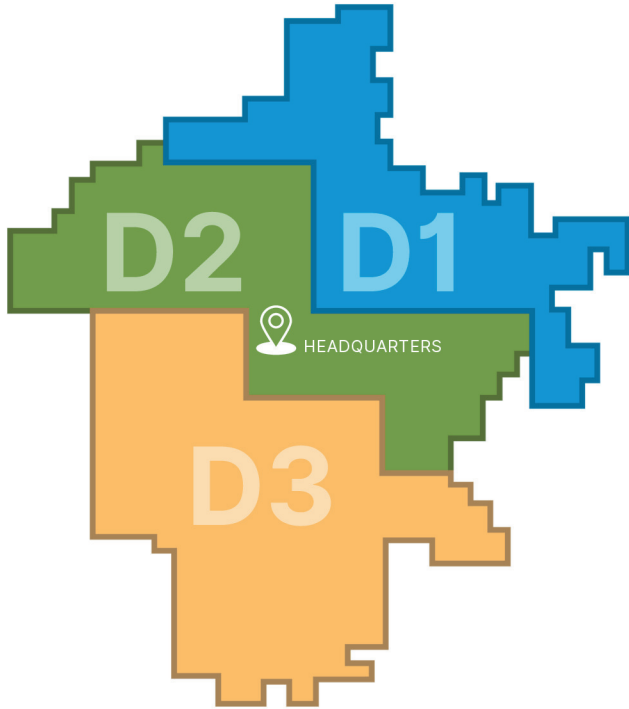
Crawford Electric
A Touchstone Energy®
Cooperative



ANNUAL REPORT 2024



BOARD OF DIRECTORS



**Please visit crawfordelec.com/aboutus if you'd like to view a more detailed service territory map.*



Bink Blankenship
District 1, Director



Janet Morrow
District 1, Director



Rick Adams
District 1, Director



Doug Murphy
District 2, Director



Debbie Willette
District 2, Vice President



Jim Biermann
District 2, Secretary



Jim Cottrell
District 3, President



Joe Cason
District 3, Director



Gary Mullen
District 3, Treasurer



*IVR: Interactive Voice Response/Automated Phone Service

3,541
of our accounts
utilize paperless
billing
16.5%
of our 21,530
accounts

avg. monthly
residential
kWh usage in
dollars
\$155

\$7,118
donated to local
charity events

640
hours used by
employees
volunteering

efficiency rebates
issued to members
\$84,250

\$838,607
capital credits
retired

262,433,393
kWh used by
residential members



21,530
active meters

17,058 memberships

RECAP OF 2024

f
6,814
followers

64
employees

34
electric safety
demonstrations

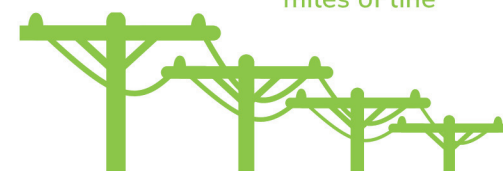


259
new services
connected



68,023
poles

3,000
miles of line



7.2
meters
per mile

40
fleet
vehicles

2,132
members voted in
the director
election
147
members attended
the annual meeting

\$13,200
raised by annual charity
golf tournament

486
poles were
replaced to
strengthen
our system

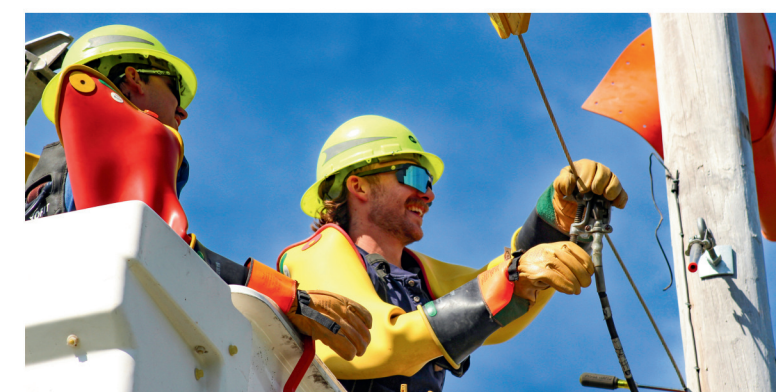


In 2024, more than 9,600 member-accounts were opted in to have their energy bill rounded up for Operation Round Up. Their small monthly contributions really added up! The Charitable Trust Board, who manages the program, awarded 41 individual grants that helped families through a hardship and nine grants to charitable organizations across our service area.

CASH BALANCE JAN. 2024 **\$6,555**
2024 INCOME TO CHARITABLE TRUST **\$63,882**
2024 OPERATION ROUND UP GRANTS **\$74,159**
NET CASH AVAILABLE DEC. 2024 **\$4,390**

2,921 MILES
overhead power lines
79 MILES
underground power lines
97% of our system
is overhead

3 CYCLE delegates
to Jeff. City &
3 YOUTH TOUR
delegates to
Washington,
D.C.



TREASURER'S REPORT 2024

BALANCE SHEET

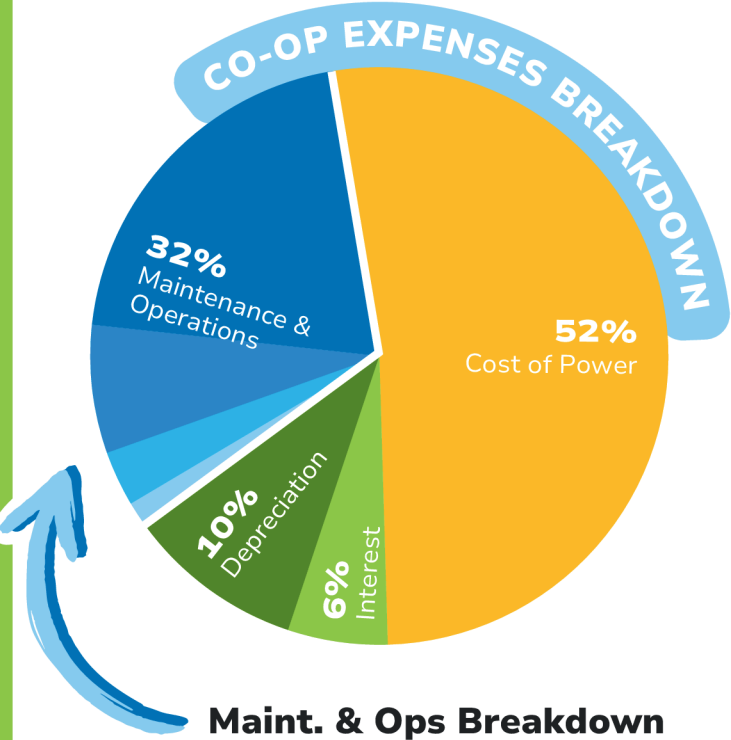
ASSETS (WHAT WE OWN)	
Cash on Hand	\$532,828
Accounts Receivable	\$4,140,562
Temporary Investments	\$275,712
Material & Supplies	\$2,451,292
Prepayments	\$114,566
Equity in Other Co-ops/Organizations	\$7,726,907
Misc. Assets	\$4,147,244
Utility Plant	\$144,527,340
Less Depreciation (\$49,409,995)	
Depreciated Value: Utility Plant	\$95,117,345
TOTAL ASSETS	\$114,506,456
LIABILITIES (WHAT WE OWE)	
Balance on Loans	\$57,701,502
Notes Payable	\$5,260,000
Accounts Payable	\$2,914,359
Consumer Deposits	\$1,403,742
Misc. Liabilities	\$4,329,933
TOTAL LIABILITIES	\$71,609,536
NET WORTH (MEMBER'S SHARE)	
Membership	\$314,020
Capital Credits	\$41,043,981
Current Margins & Other Equities	\$1,438,919
TOTAL NET WORTH	\$42,796,920
TOTAL LIABILITIES & NET WORTH	\$114,406,456

INCOME STATEMENT

TOTAL REVENUE	\$39,772,395
Revenue Deferral Incoming	\$200,000
Revenue Deferral Outgoing	\$0
TOTAL INCOME	\$39,972,395
EXPENSES	
Cost of Power	\$20,832,256
Maintenance & Operations	\$12,970,941
Depreciation	\$3,975,141
Interest	\$2,233,223
Other Deductions	\$0
TOTAL EXPENSES	\$40,011,560
OPERATING MARGIN	-\$39,165
NON-OPERATING MARGIN	\$1,478,084
TOTAL MARGIN	\$1,438,919



Gary Mullen
Treasurer



MAINTENANCE & OPERATIONS

Operations expenses include labor, material, fleet, metering and system technologies. Maintenance expenses include routine work, right-of-way clearing and storm restoration.

ADMIN/GENERAL

Admin/general includes business expenses like supplies, governance, administration, attorneys, member & community events and charitable donations.

CONSUMER ACCOUNTS

Consumer accounts expenses include labor, monthly billing, mailing to members, credit card fees and computer software.

MEMBER SERVICE

Member service expenses include labor, marketing & advertising, and communication tools.

64%
of Maint. & Ops portion

22%
of Maint. & Ops portion

10%
of Maint. & Ops portion

4%
of Maint. & Ops portion



THANKS FOR READING
until next year...



Crawford Electric
A Touchstone Energy®
Cooperative



10301 N. Service Rd., P.O. Box 10, Bourbon, MO 65441
573-732-4415 | www.crawfordelec.com | Follow us on Facebook

An equal opportunity employer and provider.